

Convert 466 inches to



$$466 \div 12 = 38.83$$

.83 of ft
.83 x 12

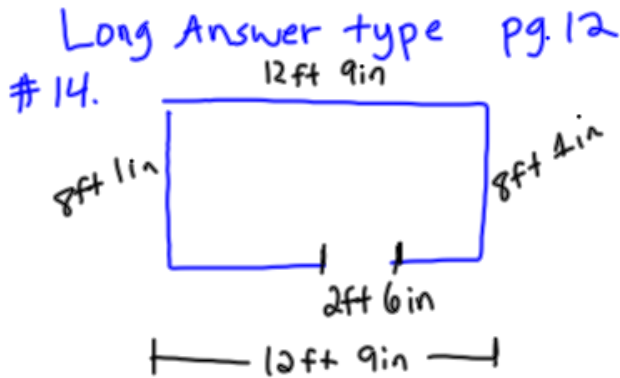
38 ft 10 in

$$38 \div 3 = 12.67$$

12 yds

.67 of yd
.67 x 3

12 yds, 2 ft, 10 in



length of border = Perimeter

$$P = 2l + 2w \quad * \text{ subtract doorway}$$

$$\text{Total ft} \Rightarrow 12 + 12 + 8 + 8 - 2 = 38 \text{ ft}$$

$$\text{Total inches} \Rightarrow 9 + 9 + 1 + 1 - 6 = 14 \text{ in}$$

$$38 \text{ ft } 14 \text{ in} \rightarrow \boxed{39 \text{ ft } 2 \text{ in}}$$

Rolls of border are sold by 12ft each. How many do we need?

$$39 \text{ ft} \div 12 = 3.25$$

3 rolls 3in left over
+ 2in above

* You will need to buy 4 rolls to cover the entire length. 5 inches extra!

What is the total cost (before taxes) if each roll costs \$12.49?

$$4 \times 12.49 = \text{\$} 49.96$$

1.3: Relating SI and Imperial Units

$$1 \text{ mile} = 1.6 \text{ km}$$

$$1 \text{ in} = 2.5 \text{ cm} \text{ (2.54)}$$

pg. 19 Ex. 1

Hannah drove 62 mi South
Farrin drove 98 km North
Who drove farther?

mi \rightarrow kms (multiply)

$$62 \times 1.6 = 99.2 \text{ kms}$$

Hannah
drove farther

ex. 2) Jackson has his permit.
His height is 5ft 9in.
Convert his height to cms.

$$5 \times 12 = 60 + 9$$

69 inches

Convert to cms

$$69 \times 2.5 = 172.5 \Rightarrow 173 \text{ cms}$$

Finish worksheet for homework