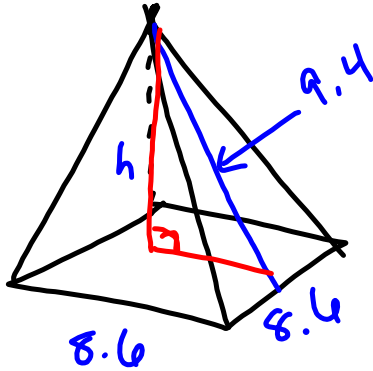
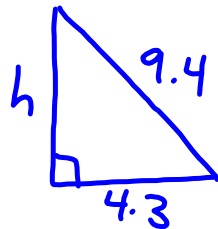


Worksheet



$$\begin{aligned}
 S.A &= lw + 4\left(\frac{bh}{2}\right) \\
 &= (8.6)(8.6) + 4\left(\frac{(8.6)(9.4)}{2}\right) \\
 &= 73.96 + 161.68 \\
 &= 235.6 \text{ units}^2
 \end{aligned}$$

$$V = \frac{lw h}{3}$$



$$\begin{aligned}
 a^2 + b^2 &= c^2 \\
 h^2 + 4.3^2 &= 9.4^2 \\
 h^2 + 18.5 &= 88.4 \\
 h^2 &= 88.4 - 18.5 \\
 h^2 &= 69.9 \\
 h &= 8.4
 \end{aligned}$$

$$V = \frac{lw h}{3}$$

$$\begin{aligned}
 V &= \frac{(8.6)(8.6)(8.4)}{3} \\
 &= 207.1 \text{ units}^3
 \end{aligned}$$