

## Practice Answers

1. D

2. A

3. B

4. A

5. C

6. B

7. C

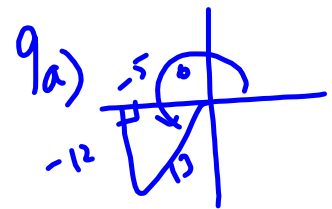
$$8. \sin \theta = \frac{-4}{2\sqrt{5}} \Rightarrow \frac{-2\sqrt{5}}{5}$$

$$\cos \theta = \frac{2}{2\sqrt{5}} \Rightarrow \frac{\sqrt{5}}{5}$$

$$\tan \theta = -2$$

$$\text{ref } \angle 63^\circ$$

$$\theta = -297^\circ$$



$$b) \cos \theta = -\frac{5}{13}$$

$$\tan \theta = \frac{12}{5}$$

$$c) \text{ref } \angle = 67^\circ$$

$$10a) 109^\circ + 289^\circ$$

$$b) 97^\circ + 263^\circ$$