

# Practice Test #1

- 1. B
- 2. B
- 3. A
- 4. C
- 5. C
- 6. B
- 7. D
- 8. D
- 9. D
- 10. C

#4

$\sqrt{80}$

80

8 10

(2) 4 (2) (5)

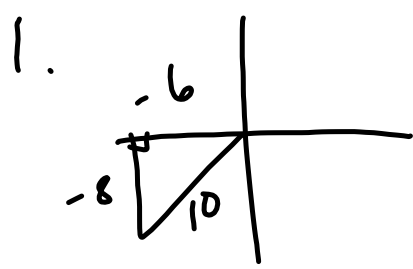
(2) (2)

$\sqrt{(2 \cdot 2)(2 \cdot 2) \cdot 5}$

$4\sqrt{5}$

$\sin \theta = \frac{-8}{4\sqrt{5}}$

$= -\frac{2}{\sqrt{5}}$



b)  $\sin \theta = \frac{-8}{10} = -\frac{4}{5}$

$\cos \theta = \frac{-6}{10} = -\frac{3}{5}$

$\tan \theta = \frac{4}{3}$

c)  $\text{ref } \angle = 53^\circ$

$\theta = 233^\circ$

$$2a) 150^\circ \text{ \& } 210^\circ$$

$$b) 225^\circ \text{ \& } 315^\circ$$

$$c) 0^\circ, 180^\circ \text{ \& } 360^\circ$$

$$d) 125^\circ \text{ \& } 305^\circ$$

$$3. 36^\circ$$

$$4. \angle A = 48^\circ \quad \text{or} \quad \angle A = 132^\circ$$

$$\angle C = 97^\circ$$

$$c = 36$$

$$\angle C = 13^\circ$$

$$c = 8.2$$