

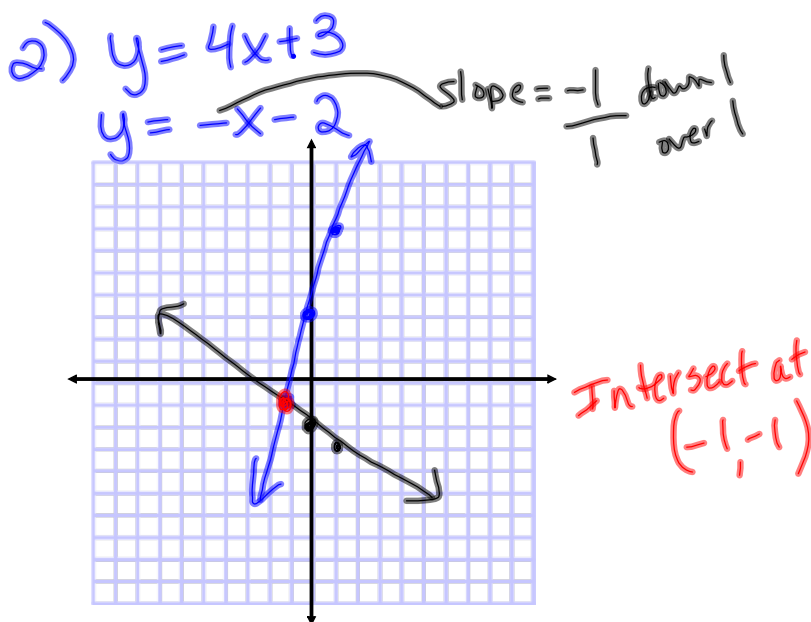
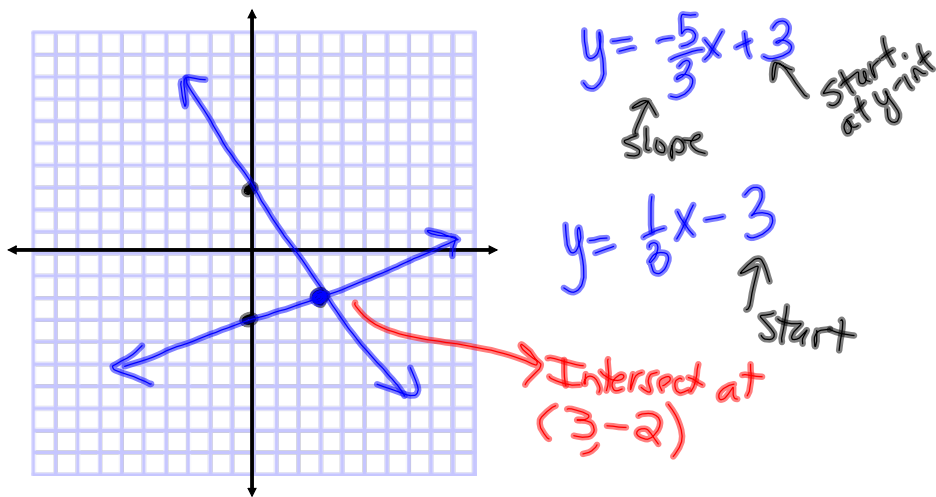
# Chp.7: Systems of Linear Equations

Finding the Intersection Point of two lines.

## Methods

- 1) Graphing
- 2) Substitution
- 3) Elimination

## Section 7.2 : Graphing (worksheet)



Answers

3)  $(4, -3)$

4)  $(2, -1)$

5)  $(2, 2)$

6) No solution

7)  $(4, -4)$

8)  $(3, -2)$

sheet 2

$$x + y = 7$$

$$\boxed{y = -x + 7}$$

$$x - y = 3$$

$$-y = -x + 3$$

$$\boxed{y = x - 3}$$