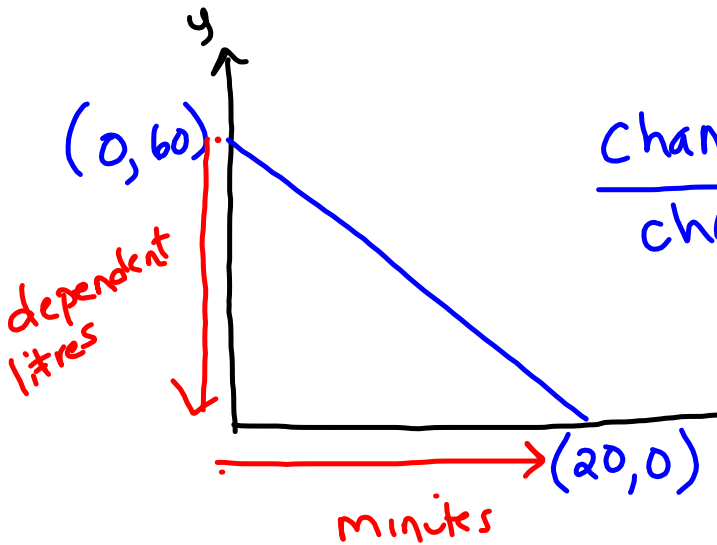


Rate of Change



$$\frac{\text{change in dependent}}{\text{change in independent}}$$

$$\frac{-60}{20} = -3 \text{ l/min}$$

ex. 2	Indep. time (min)	Dep Cost (\$)
100 <	0	50 > 6
100 <	100	56 > 6
100 <	200	62 > 6
100 <	300	68 > 6
100 <	400	74 > 6

Rate of change

$$\frac{\text{change in dep.}}{\text{change in indep.}}$$

$$\frac{6}{100} = 0.06 \text{ cents/min}$$