

Sample 2013 Part B

28. $x = 3$
 $d = 9$

32. $x = \frac{3 \pm \sqrt{19}}{2}$

29. $r = 0.85$
Sum = 266667

33. $m \leq 13$
 $m = 4$

30. $x = 12.2 \text{ cm}$

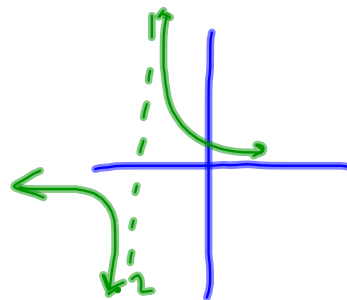
34. $x \neq 3, -2$
 $x = \frac{3}{8}, 1$

31. $y = -5(x-1)^2 + 7$
Height = 5.75m

#35, invariant points $(-2.5, -1)$ & $(-1.5, 1)$

asymptotes: $x = -2$

	x -int	y -int	
$f(x)$	$(0, 4)$	$(0, 1/4)$	$f(x)$
$f(x)$	$(-2, 0)$	none	$f(x)$



36. $x = 0$

38. $x < -1, x > 6$

37. $x = 3$
 $y = 5$